

## Premium Preparation 2100 mm Sink Unit with 2 Bowls - Right Drain

ITEM # \_\_\_\_\_

MODEL # \_\_\_\_\_

NAME # \_\_\_\_\_

SIS # \_\_\_\_\_

AIA # \_\_\_\_\_



133113 (LG2126DXEN)

Sink Unit, with 2 bowls  
(600x500x320mm) and  
right-hand drainer, 2100mm

### Short Form Specification

#### Item No. \_\_\_\_\_

The 50mm high worktop in 304 AISI stainless steel, 1,2mm in thickness, is sound-deadened and has an overflow rim and welded corners. Integral rear upstand, h=100mm, with 10mm radius. All-round apron panelling in 304 AISI s/s.

Round section legs and feet in 304 AISI stainless steel, 50mm in diameter. Height-adjustable feet (+0-50mm).

Single-pressed, sound-deadened bowls mm 600x500x300h with overflow pipe and drain hole (2"). Right hand drainer inclined towards the bowl.

### Main Features

- Sturdiness, stability and reliability of table accurately tested.

### Construction

- 100 mm upstand with 10 mm radiused corner and 13 mm deep, designed to be used against a wall.
- Round section legs with feet in 304 AISI stainless steel, 50 mm in diameter, adjustable in height by +0/-40 mm.
- 50 mm thick lower shelf, in 304 AISI stainless steel, can be easily slotted into position, 200 mm from the floor.
- Delivered in knock-down package.
- Wide range of taps are available to suit every need.
- Drainage area suitable for drying operations
- Heavy duty construction entirely in AISI 304 stainless steel to offer maximum durability.

### Optional Accessories

- Lower shelf for 2100mm tables and sinks PNC 855279 ☐
- Set of 4 wheels (2 with brake) d. 100mm PNC 855288 ☐
- Elbow operated mixer tap with spout 3/4", single hole PNC 855322 ☐
- Elbow operated mixer tap with short spout 3/4", single hole PNC 855323 ☐
- Foot operated mixer tap (hot and cold) with spout 3/4" PNC 855328 ☐
- Single plastic drain syphon 2" for Sinks PNC 895313 ☐

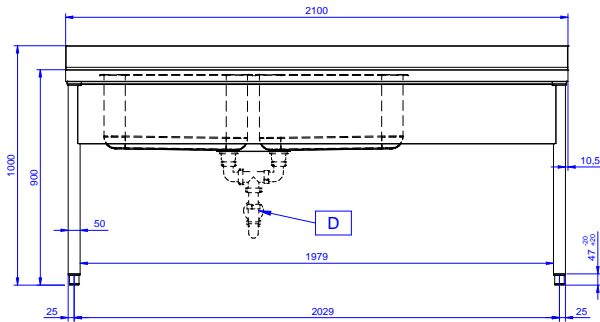
APPROVAL: \_\_\_\_\_



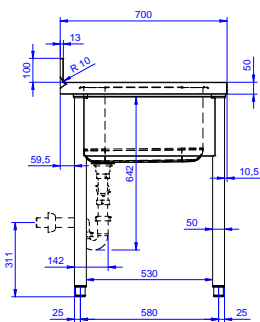
**Electrolux**  
PROFESSIONAL

## Premium Preparation 2100 mm Sink Unit with 2 Bowls - Right Drain

Front

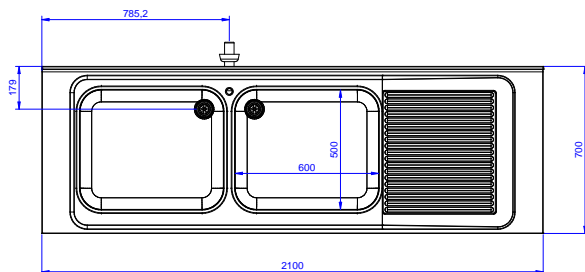


Side



D = Drain

Top



Premium Preparation  
2100 mm Sink Unit with 2 Bowls - Right Drain

The company reserves the right to make modifications to the products without prior notice. All information correct at time of printing.

2026.01.05

**Key Information:****External dimensions,  
Width:**

133113 (LG2126DXEN) 2100 mm

**External dimensions,  
Depth:**

700 mm

**External dimensions,  
Height:**

900 mm

**Upstand Dimensions,  
Height:**

100 mm

**Upstand Dimensions,  
Depth:**

13 mm

**Upstand Dimensions,  
Radius:**

R=10

**Bowls number**

2

**Bowl dimensions**

600x500xH320

**Worktop thickness:**

50 mm

**Net weight:**

65 kg